



THE COLLEGE OF
OPTOMETRISTS

Stage Two

Overarching case scenario 14

AGE AND GENDER 45 year old female

ETHNIC BACKGROUND British Afro-Caribbean

OCCUPATION AND HOBBIES Journalist. Work involves a mixture of meeting people & VDU work (about 3 hours per day) screen at 50 cm, straight-ahead gaze). Driver.

PRESENTING SYMPTOMS AND HISTORY. Eyes tend to stream with water and feel irritated after 2-3 hours on the VDU. NV and VDU (both with glasses) and DV good. Ocular history: Worn Rx for all near work for past 8 years. Last sight test 12/12 ago, but spectacles 2 years old. Occasional diplopia in extreme gaze (thinks this has always been the case).

Attended hospital for eye check ups as a child, but no patching, surgery or exercises. FH Mother went blind from glaucoma at age approx 65-70 yrs.

GENERAL HEALTH AND MEDICATION Good health. No medication

PRESENT Rx, CENTRATION AND ACUITIES CR39 single vision, lenses fine surface scratches

R +1.50 N5

L +1.50 N5 CD 62mm

PD/NCD 65/60 mm

VISION R 6/5 L 6/5

PINHOLE VISION No improvement with PH

REFRACTION R +0.25/-0.75 x180 L plano/-0.50 x180 Add +2.25DS R&L

VA R 6/4 L 6/4 **NEAR VA** R N5 L N5

ACCOMMODATION R +1.50 L + 1.50

BINOCULAR STATUS

With Rx: Dist: 2-4 prism esophoria. Rapid recovery each eye

With Rx: Near. orthophoria

Stereopsis: TNO 60 sec of arc.

MOTILITY

Marked limitation LE on abduction. Little movement past midline & widening of palpebral fissure.

Slight limitation LE on adduction, up drift of LE on attempting adduction & narrowing of the palpebral fissure.

CONVERGENCE Binocular to nose

PUPIL REACTIONS PERRLA nil RAPD

FUNDUS EXAMINATION see attached

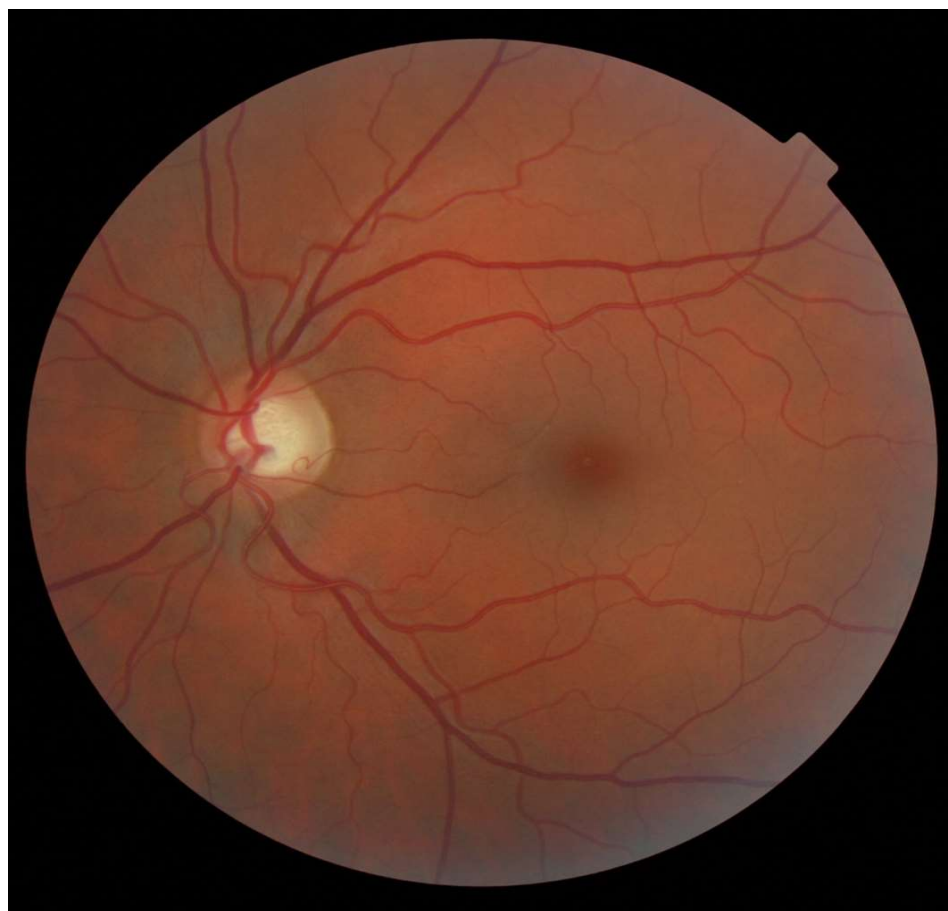
FIELDS see attached

IOP Perkins R 18 mmHg L 18 mmHg @ 4.00pm

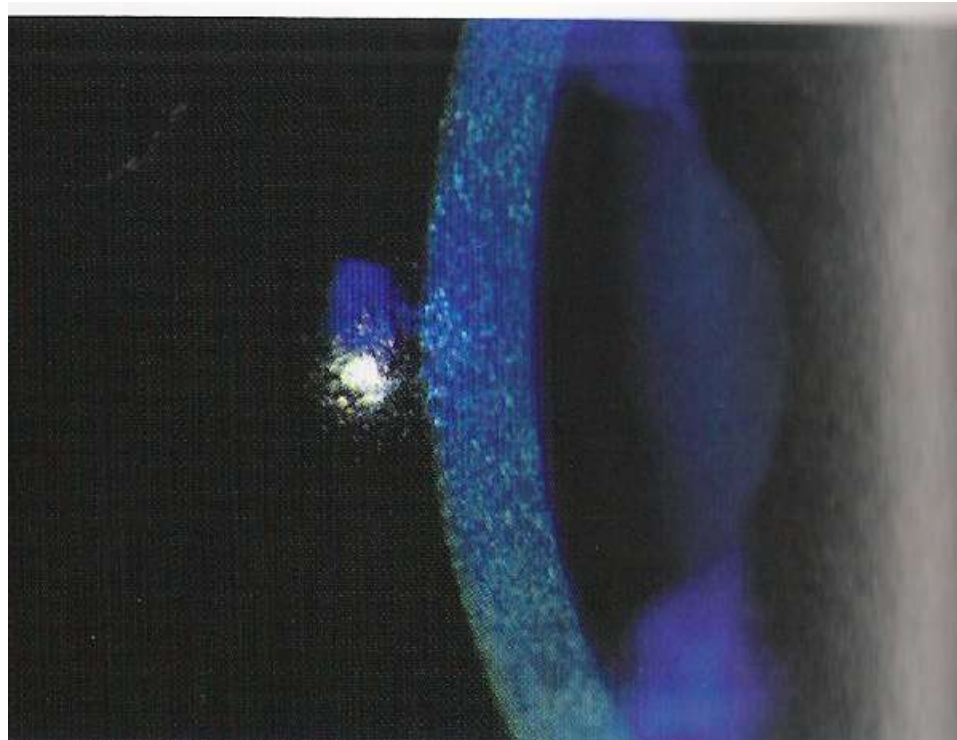
EXTERNAL EYE EXAMINATION see attached

COLOUR VISION see attached

Fundus Image



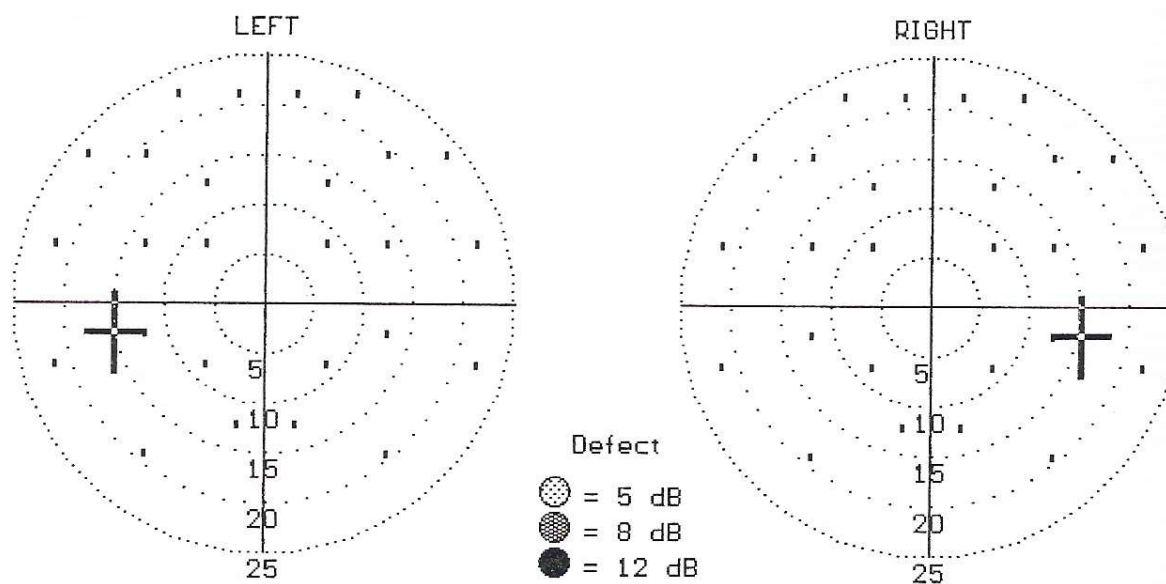
External Eyes Slit lamp with fluorescein RE (LE similar)



Field RE & LE

Multiple Stim Supra-thresh

Central Field Test



Missed/Presented = 0/26

Missed/Presented = 0/26

Threshold Sensitivity = 34 dB

Threshold Sensitivity = 35 dB

Colour Vision (Binocular)

ISHIHARA TEST SCORE SHEET (38-PLATE EDITION, 1979)

NAME:

DATE:

PLATE	SCORE	NORMAL	DEFICIENT	TOTAL CB/ WEAK	PROT ANOMALY		DEUTER ANOMALY	
					ANOPIA	ANOPIA	ANOPIA	ANOPIA
1	12	12	12	12	12	12	12	12
2	3	8	3	-				
3	6	6	5	-				
4	29	29	70	-				
5	57	57	35	-				
6	8	5	2	-				
7	3	3	5	-				
8	15	15	17	-				
9	24	74	21	-				
10	2	2	-/X					
11	6	6	-/X					
12	97	97	-/X					
13	45	45	-/X					
14	5	5	-/X					
15	7	7	-/X					
16	10	16	-/X					
17	73	73	-/X					
18	-	-	5	-				
19	-	-	2	-				
20	-	-	45	-				
21	-	-	73	-				
22	26	26			6	(2)6	2	2(6)
23	42	42			2	(4)2	4	4(2)
24	35	35			5	(3)5	3	3(5)
25	96	96			6	(9)6	9	9(6)

NOTES: - no numeral read X incorrectly read A(B) A clearer than B